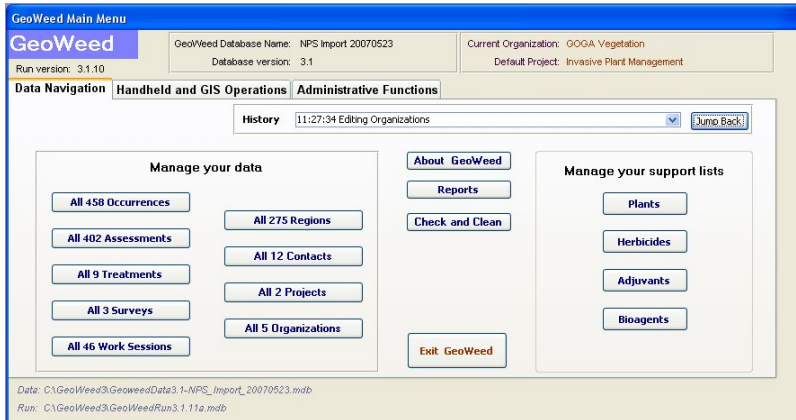


# GeoWeed

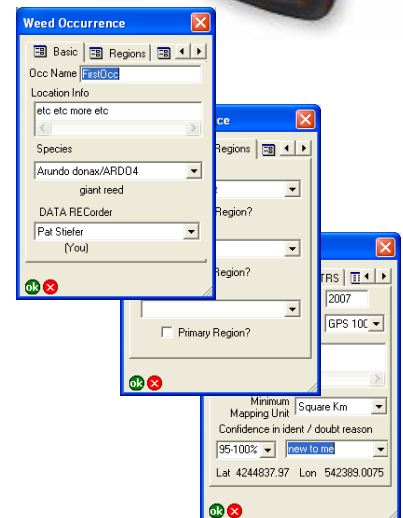
GeoWeed is a geospatially enabled data system for invasive plant project managers, supporting quality data capture, use, management, and aggregation



A powerful and intuitive user interface provides for rapid access to and review of data.



GeoWeed allows the weed manager to record locations of invasive plants for monitoring and management. Plant population sizes and locations, treatments, and revegetation actions may be tracked over time using GPS or aerial photos. Many types of supporting information may be recorded and managed, including photographs, labor sources and hours, and important contacts. GeoWeed is derived from TNC's WIMS and is based on the same NAWMA superset core data elements of Occurrence, Assessment, and Treatment, with the addition of a Survey.



### Software Features:

- Desktop application runs in MicroSoft Access 2003
- Field application runs on handheld PDA using ESRI ArcPad 6 or 7
- Referential integrity and split client/server database for robustness
- Record multi-species surveys including absence data
- Record, review, and manage monitoring photographs
- Error flagging, checking, and correction tools
- Extensive data selection and filtering tools

### Training and Support:

- Comprehensive User Guide and training slide shows available on the GeoWeed website
- Contact Sonoma Ecology Center about training workshops and user support

GeoWeed 3.3 has been released- please see the GeoWeed website for software, user guide, slide shows, and future directions. GeoWeed is a project of Sonoma Ecology Center and is distributed as free and open source under the GNU General Public License.

<http://geoweed.org>